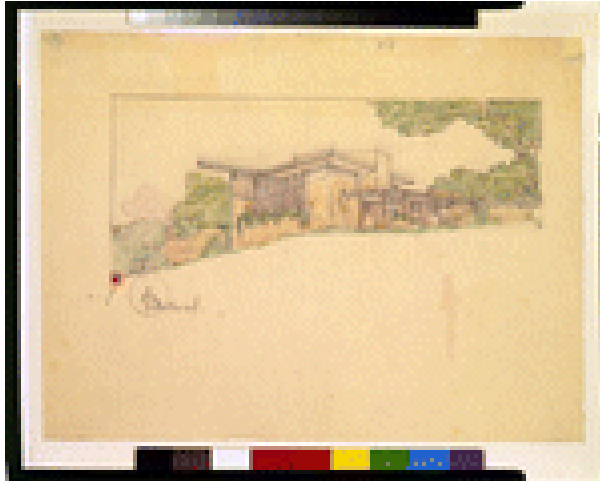


VISUAL MATERIALS IN THE DONALD D. WALKER COLLECTION
LIBRARY OF CONGRESS



TITLE: [Two houses with variant roofs ("Type A, Butterfly Roof" and "Type B, All Concrete Flat"). Type A house with butterfly roof showing landscaping]

CALL NUMBER: ADE - UNIT 2947, no. 3 (A size)
[P&P]

Check for an online group record (may link to related items)

Original materials served by appointment only.

REPRODUCTION NUMBER: LC-USZC4-2217
(color film copy transparency)
LC-USZ62-106440 (b&w film copy neg.)

RIGHTS INFORMATION: Publication may be restricted. For information see "Frank Lloyd Wright"
(http://lcweb.loc.gov/rr/print/res/259_wrig.html)

MEDIUM: 1 drawing : graphite and color pencil.

CREATED/PUBLISHED: [between 1920 and 1930]

CREATOR:

Wright, Frank Lloyd, 1867-1959, architect.

NOTES:

Title devised by Library staff.

Forms part of: Visual materials from Donald D. Walker collection.

FORMAT:

Architectural drawings 1920-1930.

REPOSITORY: Library of Congress Prints and Photographs Division Washington, D.C. 20540 USA

DIGITAL ID: (color film copy transparency)
cph 3g02217
<http://hdl.loc.gov/loc.pnp/cph.3g02217>
(b&w film copy neg.) cph 3c06440
<http://hdl.loc.gov/loc.pnp/cph.3c06440>

CONTROL #: 2002722718