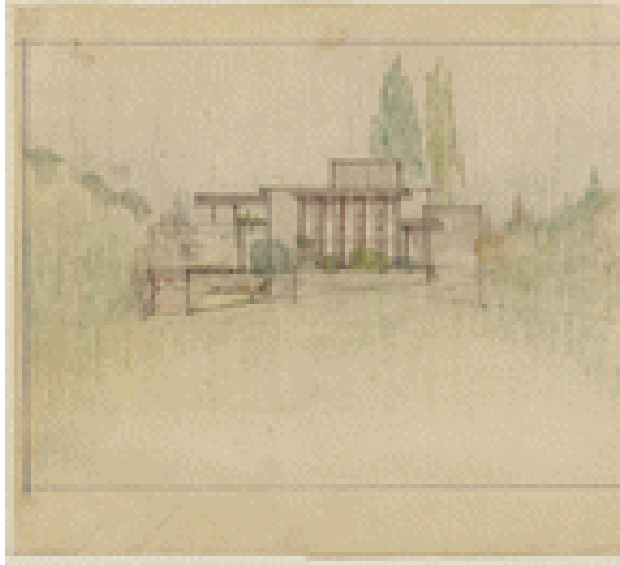


DONALD WALKER RELATED ITEMS AT LIBRARY OF CONGRESS



**TITLE:** [House for Mrs. Charles P. Lowes, Eagle Rock, Los Angeles, California. Exterior front, third scheme]

**CALL NUMBER:** ADE - UNIT 2962, no. 10 (B size) [P&P]

Check for an online group record (may link to related items)

Original materials served by appointment only.

**REPRODUCTION NUMBER:** LC-DIG-ppmsca-005612 (digital file from original)  
LC-USZC4-1872 (color film copy transparency)  
LC-USZ62-102820 (b&w film copy neg.)

**RIGHTS INFORMATION:** Publication may be restricted. For information see "Frank Lloyd Wright" ([http://lcweb.loc.gov/rr/print/res/259\\_wrig.html](http://lcweb.loc.gov/rr/print/res/259_wrig.html))

**MEDIUM:** 1 drawing : color pencil and graphite on Japanese paper.

**CREATED/PUBLISHED:** [1922]

**CREATOR:**

Wright, Frank Lloyd, 1867-1959, architect.

**NOTES:**

Title devised by Library staff.

Forms part of: Visual materials from Donald D. Walker collection.

Exhibited: LA@LC, Walt Disney Concert Hall, Los Angeles, California, 2004.

**FORMAT:**

Architectural drawings 1920-1930.

**REPOSITORY:** Library of Congress Prints and Photographs Division Washington, D.C. 20540 USA

**DIGITAL ID:** (digital file from original)  
ppmsca 05612  
<http://hdl.loc.gov/loc.pnp/ppmsca.05612>  
(color film copy transparency) cph 3g01872  
<http://hdl.loc.gov/loc.pnp/cph.3g01872>  
(b&w film copy neg.) cph 3c02820  
<http://hdl.loc.gov/loc.pnp/cph.3c02820>

**CONTROL #:** 2002735802