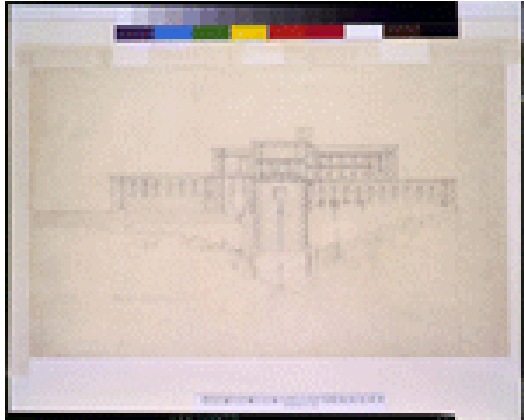


DONALD WALKER RELATED ITEMS AT LIBRARY OF CONGRESS



FORMAT:

Architectural drawings 1920-1930.

REPOSITORY: Library of Congress Prints and Photographs Division Washington, D.C. 20540 USA

DIGITAL ID: (color film copy transparency)
cph 3g02235
<http://hdl.loc.gov/loc.pnp/cph.3g02235>

CONTROL #: 2002722721

TITLE: [Resort ("Doheny Ranch") for Edward L. Doheny, Beverly Hills, California. "House A" exterior front]

CALL NUMBER: ADE - UNIT 2952, no. 2 (C size) [P&P]

Check for an online group record (may link to related items)

Original materials served by appointment only.

REPRODUCTION NUMBER: LC-USZC4-2235
(color film copy transparency)

RIGHTS INFORMATION: Publication may be restricted. For information see "Frank Lloyd Wright"
(http://lcweb.loc.gov/rr/print/res/259_wrig.html)

MEDIUM: 1 drawing : graphite on Japanese paper.

CREATED/PUBLISHED: [1923]

CREATOR:

Wright, Frank Lloyd, 1867-1959, architect.

NOTES:

Title devised by Library staff.

Forms part of: Visual materials from Donald D. Walker collection.