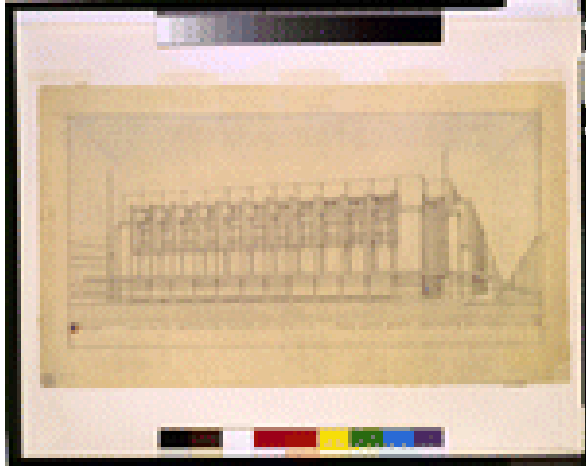


VISUAL MATERIALS FROM THE DONALD D. WALKER COLLECTION  
LIBRARY OF CONGRESS



**TITLE:** Architectural drawing for a commercial building ("Building for Merchandizing"), Hollywood, California

**CALL NUMBER:** ADE - UNIT 2955, no. 1 (C size) [P&P]

Check for online items from this group  
Original materials served by appointment only.

**REPRODUCTION NUMBER:** LC-USZC4-2199  
(color film copy transparency)  
LC-USZ62-106434 (b&w film copy neg.)

**RIGHTS INFORMATION:** Publication may be restricted. For information see "Frank Lloyd Wright"  
([http://lcweb.loc.gov/rr/print/res/259\\_wrig.html](http://lcweb.loc.gov/rr/print/res/259_wrig.html))

**SUMMARY:** Preliminary drawing showing exterior front as a perspective projection.

**MEDIUM:** 1 item : graphite and colored pencil ; in folder(s) 56 x 71 cm.

**CREATED/PUBLISHED:** 1922.

**CREATOR:**

Wright, Frank Lloyd, 1867-1959, architect.

**NOTES:** Finding aid (unpublished): Filed by UNIT number, available in Prints and Photographs Reading Room.

Signed with Wright's chop.

Date from Frank Lloyd Wright : an index to the Taliesin correspondence / edited with an introduction by Anthony Alofsin, 1988, vol. 1, p. xxix.

UNIT title devised.

Forms part of: Visual materials from **Donald D. Walker** collection.

**SUBJECTS:**

Mercantile facilities--California--Hollywood--1920-1930.

**FORMAT:**

Architectural drawings 1920-1930.  
Chops 1920-1930.

**PART OF:** Visual materials from **Donald D. Walker** collection

**REPOSITORY:** Library of Congress Prints and Photographs Division Washington, D.C. 20540 USA

**DIGITAL ID:** (color film copy transparency)  
cph 3g02199  
<http://hdl.loc.gov/loc.pnp/cph.3g02199>  
(b&w film copy neg.) cph 3c06434  
<http://hdl.loc.gov/loc.pnp/cph.3c06434>

**CONTROL #:** 2001696322