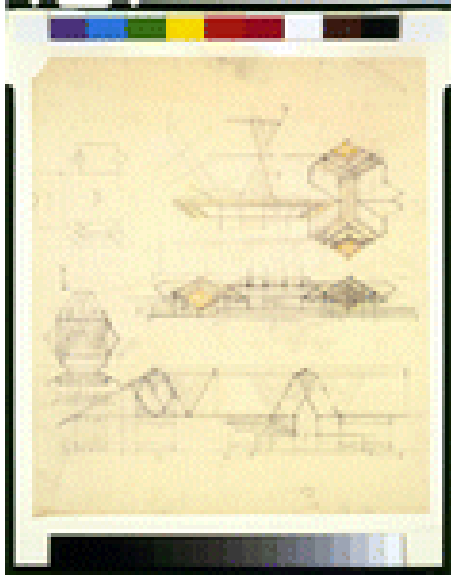


DONALD WALKER RELATED ITEMS AT LIBRARY OF CONGRESS



**TITLE:** [Resort ("San Marcos Water Gardens") for Alexander J. Chandler, Chandler, Arizona. Early pavilions with patio and typical cabin]

**CALL NUMBER:** ADE - UNIT 2969, no. 1 (C size) [P&P]

Check for an online group record (may link to related items)  
Original materials served by appointment only.

**REPRODUCTION NUMBER:** LC-USZC4-1869 (color film copy transparency)  
LC-USZ62-102816 (b&w film copy neg.)

**RIGHTS INFORMATION:** Publication may be restricted. For information see "Frank Lloyd Wright" ([http://lcweb.loc.gov/rr/print/res/259\\_wrig.html](http://lcweb.loc.gov/rr/print/res/259_wrig.html))

**MEDIUM:** 1 drawing : graphite and color pencil on tracing paper.

**CREATED/PUBLISHED:** [1929]

**CREATOR:**

Wright, Frank Lloyd, 1867-1959, architect.

**NOTES:**

Inscription on recto: Typical Cabin.

Title devised by Library staff.

Forms part of: Visual materials from Donald D. Walker collection.

**FORMAT:**

Architectural drawings 1920-1930.

**REPOSITORY:** Library of Congress Prints and Photographs Division Washington, D.C. 20540 USA

**DIGITAL ID:** (color film copy transparency) cph 3g01869  
<http://hdl.loc.gov/loc.pnp/cph.3g01869>  
(b&w film copy neg.) cph 3c02816  
<http://hdl.loc.gov/loc.pnp/cph.3c02816>

**CONTROL #:** 2002735814